



Holmdale Road, West Hampstead, NW6

£1,325,000



Holmdale Road, West Hampstead, NW6

Situated in the heart of West Hampstead is this character filled four bedroom, two bathroom duplex garden apartment offering 1280 Sq Ft (118 Sq M) of internal space including an impressive reception room which features high ceilings, a stunning fireplace and large sash bay windows.

This ideal family flat is one of only two apartments in the building and is arranged over two floors with three bedrooms with ample storage and a utility room found on the lower level with a further bedroom/office, kitchen and reception room arranged over the upper level. Key features include an extensive 50ft tranquil private garden that is perfect for entertaining and a share of freehold.

Holmdale Road is perfectly located close to the local amenities, restaurants and transport links that West End Lane has to offer

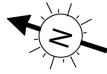
Features


- Situated In The Heart Of West Hampstead
- Four Bedrooms
- Two Bathrooms
- Duplex Apartment
- 50ft Private Rear Garden
- 1280 SQ FT (118 SQ M) of Internal space
- Master Bedroom with En-suite
- Family Apartment
- High Ceilings & Large Windows
- Utility Room
- Share Of Freehold

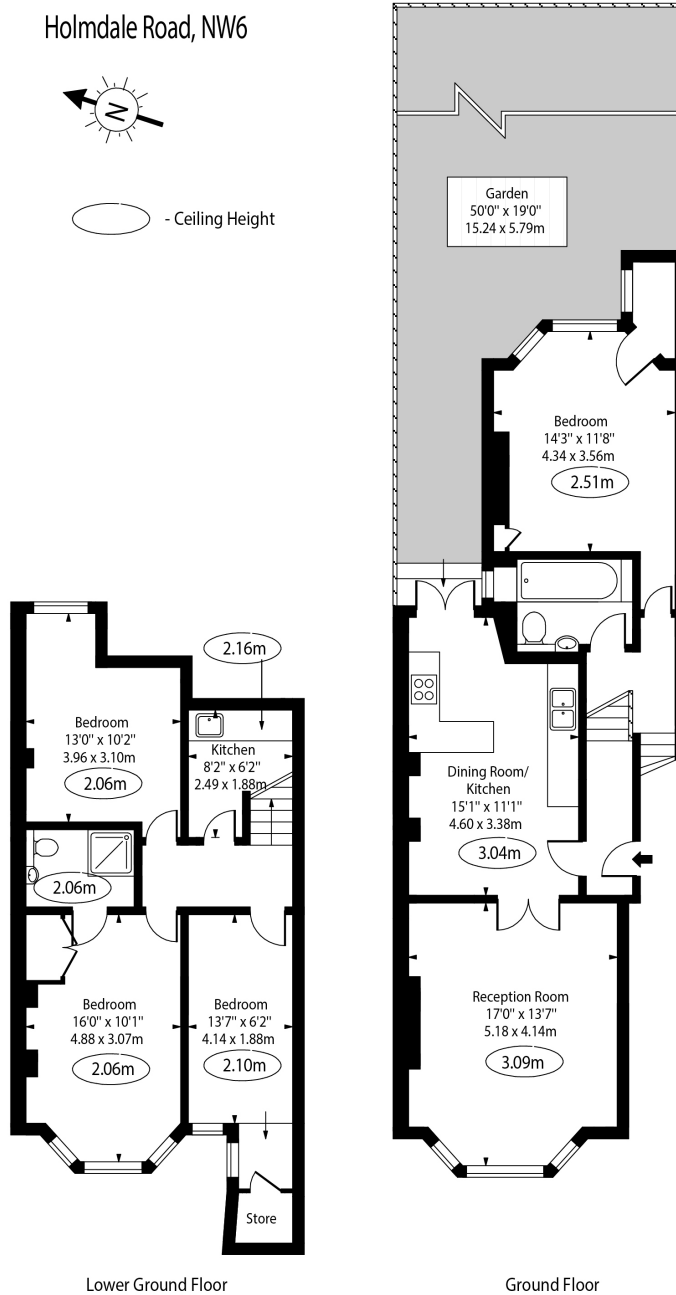


Holmdale Road, West Hampstead, NW6

Holmdale Road, NW6



 - Ceiling Height



Approx Gross Internal Area 1280 Sq Ft - 118.91 Sq M

For Illustration Purposes Only - Not To Scale Floor Plan by www.nogaphotostudio.com Ref: No.50534

This floor plan should be used as a general outline for guidance only. Any intending purchaser or lessee should satisfy themselves by inspection, searches, enquiries and full survey as to the correctness of each statement. Any areas, measurements or distances quoted are approximate and should not be used to value a property or be the basis of any sale or let.