



**Holmdale Road, West Hampstead, NW6**

**£3,150,000**



## Holmdale Road, West Hampstead, NW6

Discover this exceptional 2,700 sq ft Victorian home in the heart of West Hampstead, offering a unique opportunity for both investors and families. Currently configured as two stunning apartments, this elegant property blends period charm with modern living, set on a tree-lined street moments from the local amenities, shops and transport links that West End Lane has to offer.

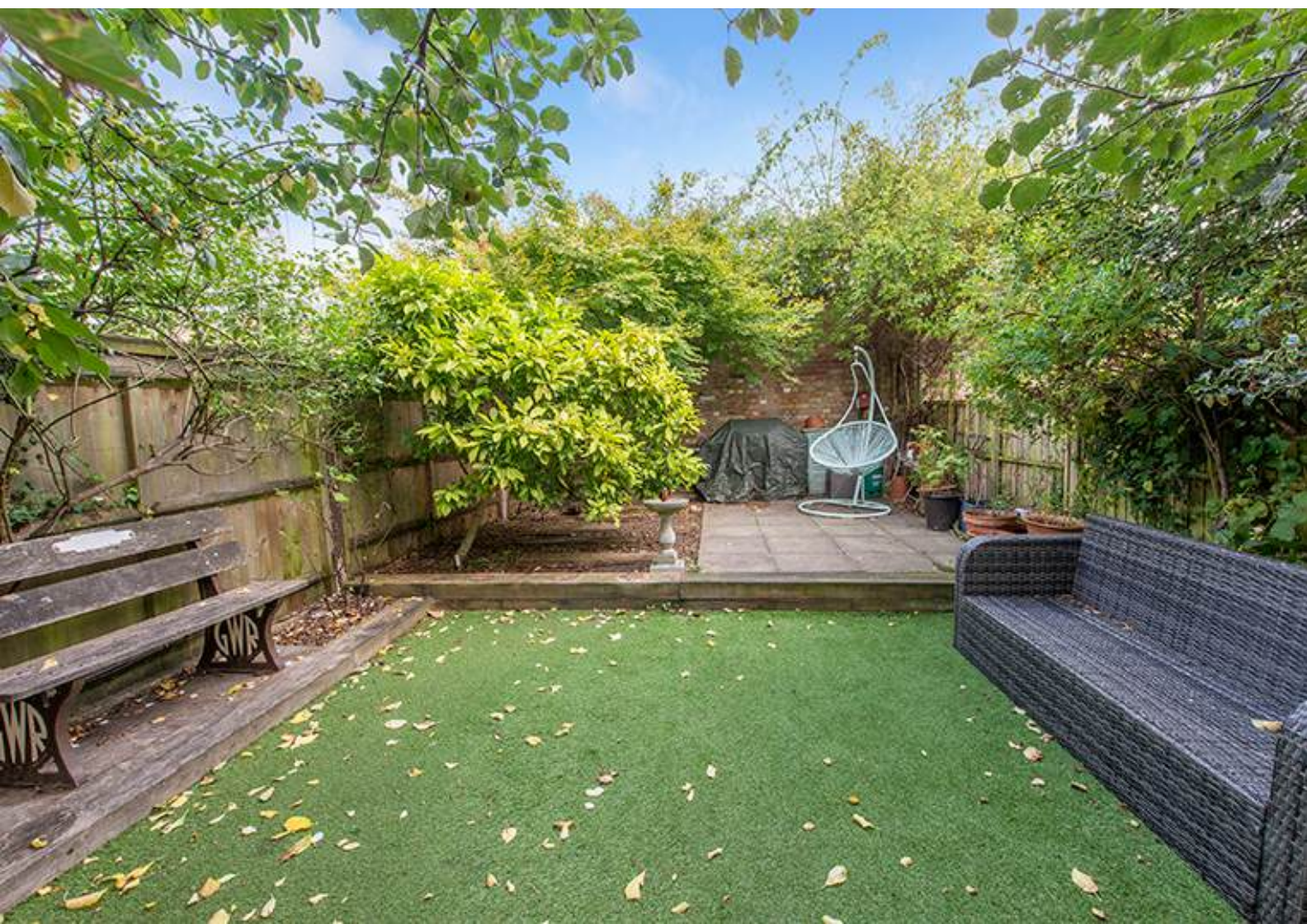
On offer is a combined 8 bedroom, 4 bathroom handsome house boasting a delightful roof terrace and an extensive oasis of a private rear garden that is ideal for children, outdoor dining or entertainment. Key features include high ceilings, large windows and wooden flooring throughout.

Properties of this nature are rare to come across in the local area, the flexible property offers options for rental income or reconfiguration into a single family home, with the potential for a stunning full restoration. With proximity to excellent schools, green spaces, and West Hampstead's transport hubs, this is an opportunity not to be missed.

Holmdale Road is perfectly situated close to the local amenities, restaurants and transport links that West End Lane has to offer. West Hampstead is arguably one of the best serviced locations in London with Kings Cross accessible in just 20 minutes.

### Features

- Unique Opportunity
- Building Consisting Of Two Properties
- Over 2,700 Sq Ft (256 Sq M)
- Located In The Heart Of West Hampstead
- Roof Terrace
- Private Garden
- Elegant Property With Charm
- 8 Bedrooms
- 4 Bathrooms



# Holmdale Road, West Hampstead, NW6



Approx Gross Internal Area 2740 Sq Ft - 254.55 Sq M  
 Approx Floor Area Including Restricted Heights 2766 Sq Ft - 256.96 Sq M

For Illustration Purposes Only - Not To Scale Floor Plan by www.nogaphotostudio.com Ref: No.50534

This floor plan should be used as a general outline for guidance only. Any intending purchaser or viewer should satisfy themselves by inspection with the architect and full survey as to the correctness of such statements. Any areas, measurements or observations should only apply to what is shown and should not be used to value a property or as the basis of any sale or let.