



Park View Road, Finchley, N3

£2,000
pcm



Park View Road, Finchley, N3

Situated opposite Victoria Park is this freshly painted and well proportioned two bedroom garden apartment with off street parking.

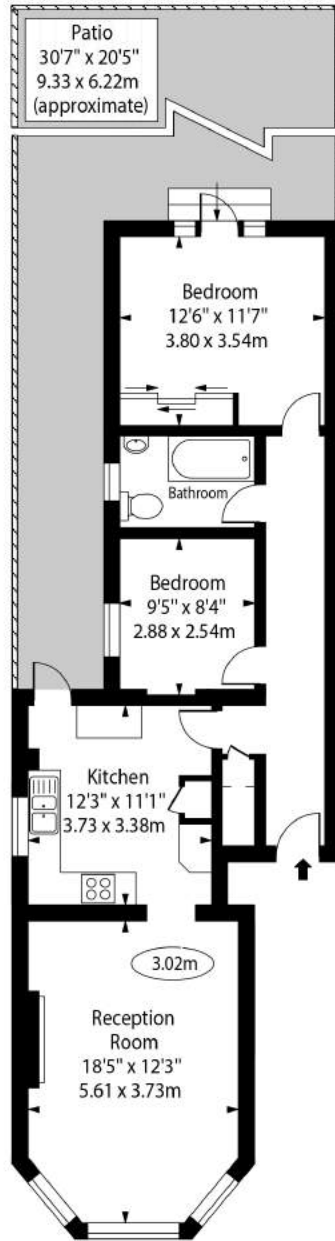
Park View Road is located just 0.5 miles from the local amenities and restaurants that can be found on Ballards Lane and equal distance to Finchley Central Underground station (Northern Line).

Features

- Freshly Painted Throughout
- Ample Storage
- Two Bedrooms
- Garden Apartment
- Off Street Parking
- 0.5 Miles From Finchley Central Station
- Well Proportioned
- 783 Sq Ft (72 Sq M) Of Internal Space
- Available Now
- Offered Unfurnished



Park View Road,
Finchley, N3



Ground Floor

Approx Gross Internal Area 771 Sq Ft - 71.64 Sq M

Approx Floor Area Including Restricted Heights 783 Sq Ft - 72.74 Sq M

For Illustration Purposes Only - Not To Scale Floor Plan by www.nogaphotostudio.com Ref: No.49975

This floor plan should be used as a general outline for guidance only. Any intending purchaser or lessee should satisfy themselves by inspection, searches, enquiries and full survey as to the correctness of each statement. Any areas, measurements or distances quoted are approximate and should not be used to value a property or be the basis of any sale or let.