



Alderside Apartments, Salusbury Road, Queens Park, NW6

£769,950



Alderside Apartments, Salusbury Road, Queens Park, NW6

Situated on the third floor of this luxurious portered block is this impressive two double bedroom, two bathroom apartment benefiting from a stunning terrace and one allocated underground parking space.

This well proportioned 802 Sq Ft (74 Sq M) flat boasts a stunning open plan kitchen/reception room which offers direct access to a large south west facing terrace, a generous master bedroom with en-suite and contemporary family bathroom. Additional key features include access to a communal garden, a storage room and 24/7 portering.

Alderside Apartments is ideally located just 0.1 miles from Queens Park station (Bakerloo & Overground) and the local shops and restaurants found on Salusbury Road.

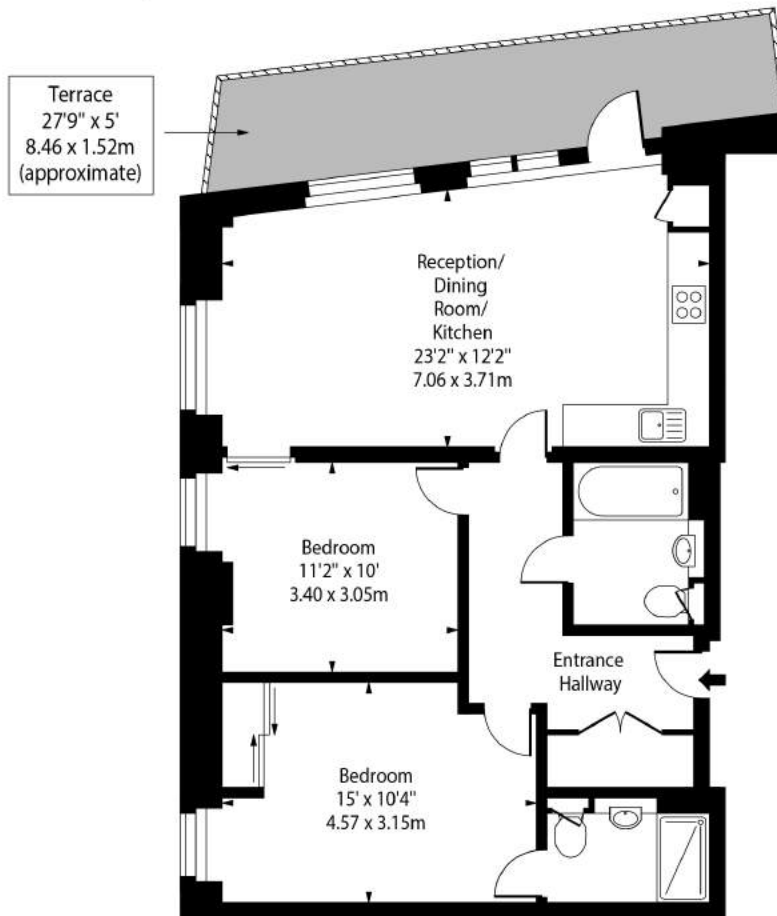
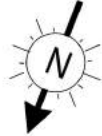
Features

- Located Within A Luxurious Block
- Two Double Bedrooms
- Two Bathrooms
- Large Terrace
- 802 Sq Ft (74 Sq M)
- One Underground Parking Space
- Long Lease
- Generous Master Bedroom With En-Suite
- 0.1 Miles From Queens Park Station
- Access To Communal Gardens



Alderside
Apartments,
Salisbury Road,
Queens Park, NW6

Alderside Apartments,
Salisbury Road, NW6



Third Floor

Approx Gross Internal Area 802 Sq Ft - 74.51 Sq M

For Illustration Purposes Only - Not To Scale Floor Plan by www.epixandplans.com Ref: No.49842

This floor plan should be used as a general outline for guidance only. Any intending purchaser or lessee should satisfy themselves by inspection, searches, enquiries and full survey as to the correctness of each statement. Any areas, measurements or distances quoted are approximate and should not be used to value a property or be the basis of any sale or let.