



**Offord Road, London, N1**

£3,300  
pcm



## Offord Road, London, N1

A beautifully presented and recently painted two double bedroom, two bathroom garden duplex apartment offering 1000 Sq Ft (93 Sq M) of internal space.

The raised ground floor of this fine flat benefits from a generous reception room and a modern kitchen/dining area which offers direct access to the private rear garden. The lower level includes two spacious double bedrooms and two bathrooms as well as further access to the rear garden.

Offord Road is perfectly located close to a variety of local amenities, cafes and restaurants as well as Highbury & Islington Station (Victoria Line, Overground & Thameslink) with Barnsbury Station (Overground) also very close by. St Pancras International is within 1.5 miles of this apartment which provides swift access to Paris via the Eurostar.

### Features

- Available Now
- Two Double Bedrooms
- Two Bathrooms
- Duplex Apartment
- Private Rear Garden
- 1000 Sq Ft (93 SQ M) Of Internal Space
- Modern Kitchen/Dining Area
- Ideal Location
- Offered Unfurnished

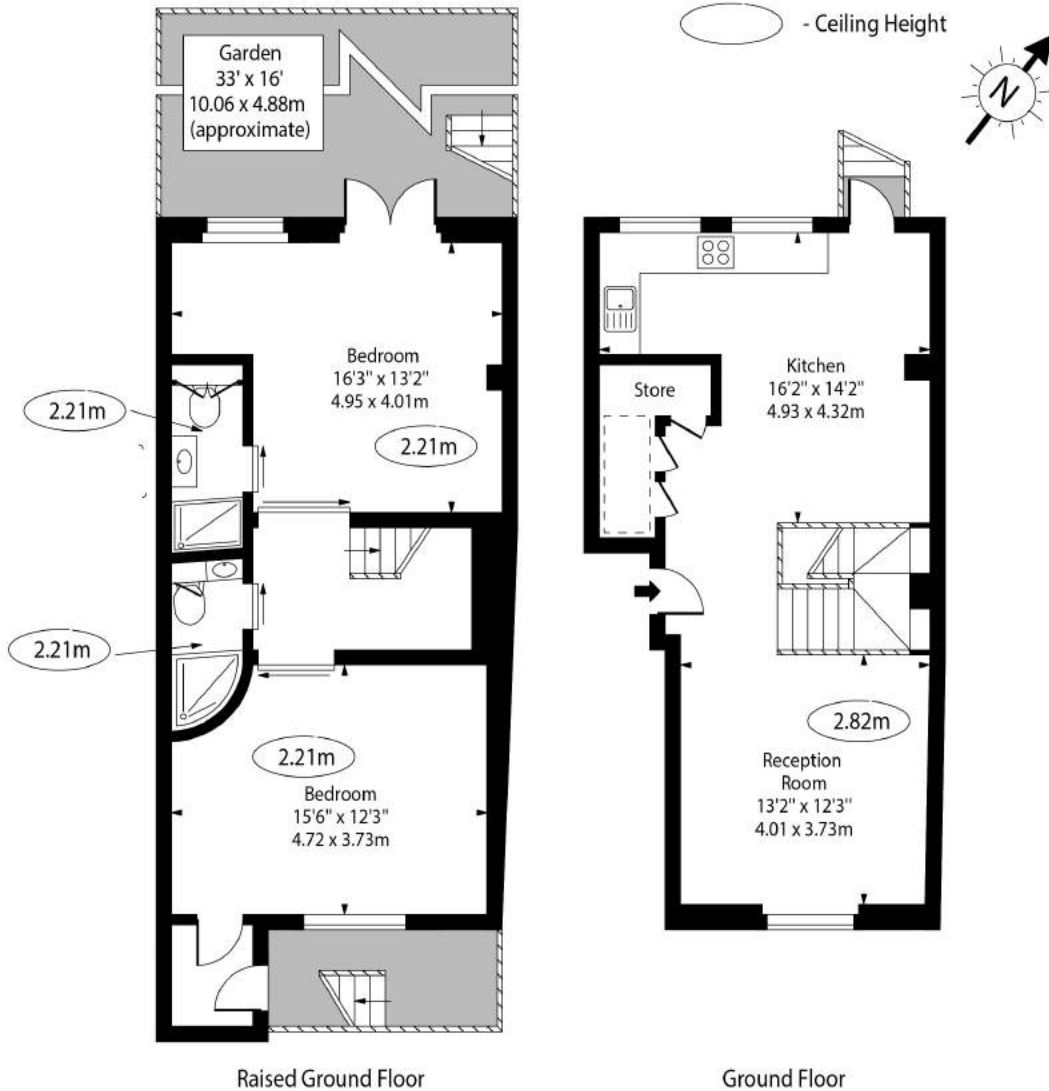






Offord Road, London,  
N1

Offord Road, N1 1DL



Approx Gross Internal Area 1009 Sq Ft - 93.74 Sq M

For Illustration Purposes Only - Not To Scale Floor Plan by [www.nogaphotostudio.com](http://www.nogaphotostudio.com) Ref: No.48725

This floor plan should be used as a general outline for guidance only. Any intending purchaser or lessee should satisfy themselves by inspection, searches, enquiries and full survey as to the correctness of each statement. Any areas, measurements or distances quoted are approximate and should not be used to value a property or be the basis of any sale or let.