



**Heathcroft, Hampstead Way, Hampstead Garden Suburb,
NW11**

£640,000



Heathcroft, Hampstead Way, Hampstead Garden Suburb, NW11

Arranged over the raised ground floor of a handsome mansion block is this elegant two double bedroom apartment offering close to 685 Sq Ft (63 Sq M) of internal space.

This fine flat offers a character filled reception with views of the stunning landscaped communal gardens, a modern fully fitted kitchen and a contemporary bathroom.

Heathcroft is a portered mansion block located just off Hampstead Way and adjacent to Hampstead Heath Extension with Golders Green underground station (Northern Line) just 0.7 miles away.

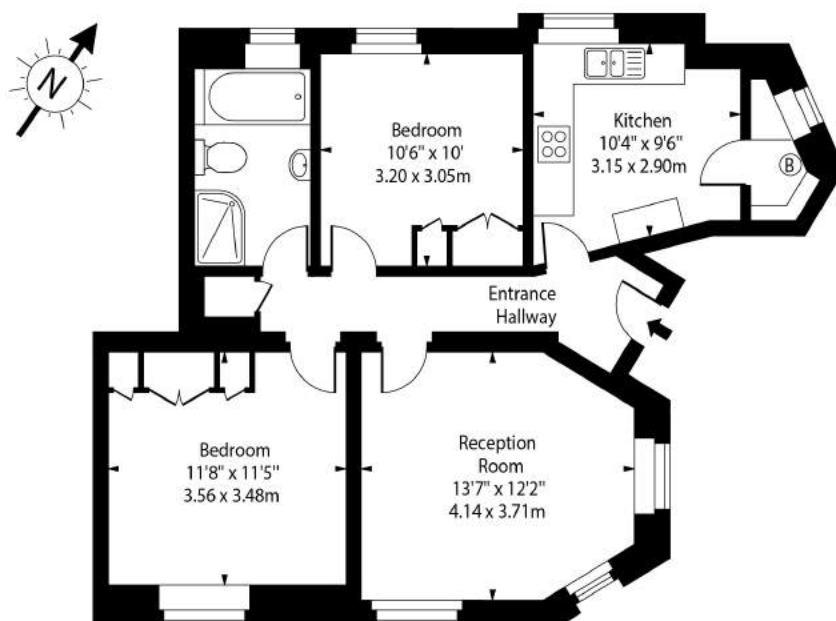
Features

- Two Double Bedrooms
- Within a Handsome Mansion Block
- Close To 685 Sq Ft (63 Sq M) Of Internal Space
- Contemporary Bathroom
- Fully Fitted Kitchen
- Portered Block
- Adjacent To Hampstead Heath Extension
- Landscaped Communal Gardens
- Character Filled Reception Room
- Share Of Freehold



Heathcroft,
Hampstead Way,
Hampstead Garden
Suburb, NW11

Heathcroft,
Hampstead Way, NW11 7HJ



Raised Ground Floor

Approx Gross Internal Area 683 Sq Ft - 63.45 Sq M

For Illustration Purposes Only - Not To Scale Floor Plan by www.nogaphotostudio.com Ref: No.47700

This floor plan should be used as a general outline for guidance only. Any intending purchaser or lessee should satisfy themselves by inspection, searches, enquiries and full survey as to the correctness of each statement. Any areas, measurements or distances quoted are approximate and should not be used to value a property or be the basis of any sale or let.