



**Lyttelton Court, Lyttelton Road, London, N2**

£475  
p/w



## Lyttelton Court, Lyttelton Road, London, N2

A well proportioned and beautifully presented two double bedroom, first floor apartment offering 725 Sq Ft (67 Sq M) of internal space, including an attractive reception room, modern kitchen and two generously sized double bedrooms.

Further benefits include a balcony, access to a delightful communal garden, residents parking and the close proximity to Lyttelton Playing Fields.

Lyttelton Court is located just 0.8 miles from East Finchley Underground station (Northern Line), with several local amenities, restaurants and cafés found nearby on Market Place.

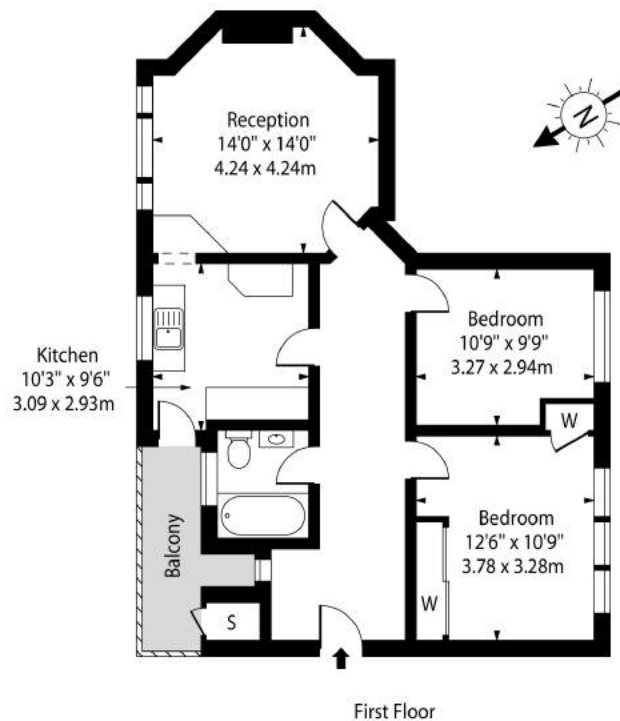
### Features

- First Floor Flat
- Two Double Bedrooms
- Private Balcony & Access To Communal Garden
- Offered Furnished or Unfurnished
- Well Proportioned Apartment
- Fully Fitted Modern Kitchen
- 0.8 Miles To East Finchley Underground
- Local Amenities Near By On Market Place
- Viewings Highly Recommended
- Available From 18th September 2023



Lyttelton Court,  
Lyttelton Road,  
London, N2

Lyttelton Court,  
Lyttelton Road, N2



Approx Gross Internal Area 725 Sq Ft - 67.42 Sq M

For Illustration Purposes Only - Not To Scale Floor Plan by [www.nogaphotostudio.com](http://www.nogaphotostudio.com) Ref: No.40890

This floor plan should be used as a general outline for guidance only. Any intending purchaser or lessee should satisfy themselves by inspection, searches, enquiries and full survey as to the correctness of each statement. Any areas, measurements or distances quoted are approximate and should not be used to value a property or be the basis of any sale or let.