



Lindfield Gardens, Hampstead, NW3

£4,500
pcm



Lindfield Gardens, Hampstead, NW3

Meticulously finished to highest of standards is this two double bedroom, two bathroom first floor apartment benefiting from 936 Sq Ft (87 Sq M) of internal space.

Key features include a magnificent 31ft open plan kitchen/reception which is ideal for entertaining, a generous master bedroom with an exquisite en-suite attached and ample storage.

This property combines contemporary elegance with a prime location, offering a luxurious and comfortable living experience with outstanding views whilst benefiting from high ceilings, an abundance of natural light and high end appliances.

Lindfield Gardens is perfectly positioned just 0.5 miles from Hampstead Underground station (Northern Line) and 0.7 miles from West Hampstead's Underground (Jubilee Line), Overground and Thameslink station. Local amenities, restaurants and further transport links can be found on the Finchley Road which is located just 0.2 miles from the apartment.

*Please note virtual furnishing is included within some of the marketing material for this apartment.

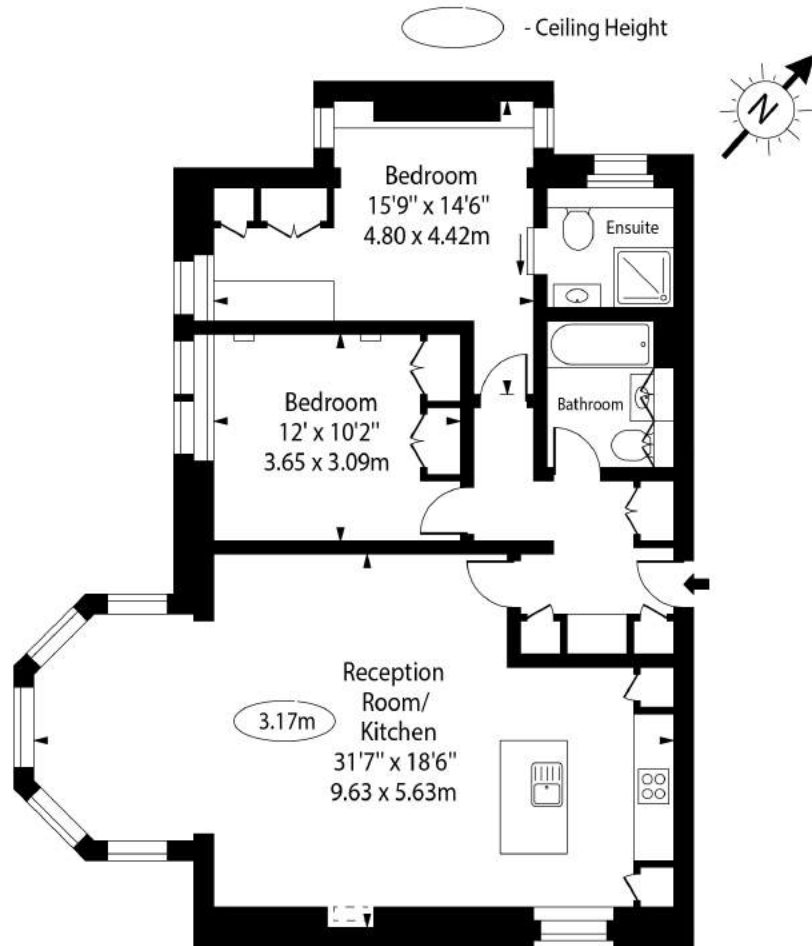
Features

- Meticulously Finished
- First Floor Flat
- 936 Sq Ft (87 Sq M) Of Internal Space
- 31ft Reception Room
- Master Bedroom With En-Suite
- High Ceilings
- Abundance Of Natural Light
- High End Appliances
- Available Now
- Offered Unfurnished



Lindfield Gardens, Hampstead, NW3

Lindfield Gardens, NW3 6PX



First Floor

Approx Gross Internal Area 936 Sq Ft - 87.00 Sq M

For Illustration Purposes Only - Not To Scale Floor Plan by www.epixandplans.com Ref: No.47065

This floor plan should be used as a general outline for guidance only. Any intending purchaser or lessee should satisfy themselves by inspection, searches, enquiries and full survey as to the correctness of each statement. Any areas, measurements or distances quoted are approximate and should not be used to value a property or be the basis of any sale or let.