



Priory Terrace, West Hampstead, NW6

£1,125,000



Priory Terrace, West Hampstead, NW6

A stylish and generously proportioned three bedroom, three bathroom garden apartment benefiting from 1106 Sq Ft (103 Sq M) of internal space including a modern open plan/kitchen reception room offering direct access to the private rear garden.

This garden flat is accessed via a private entrance and further benefits from side access with additional key features including a modern fully fitted kitchen, utility room and a share of the freehold.

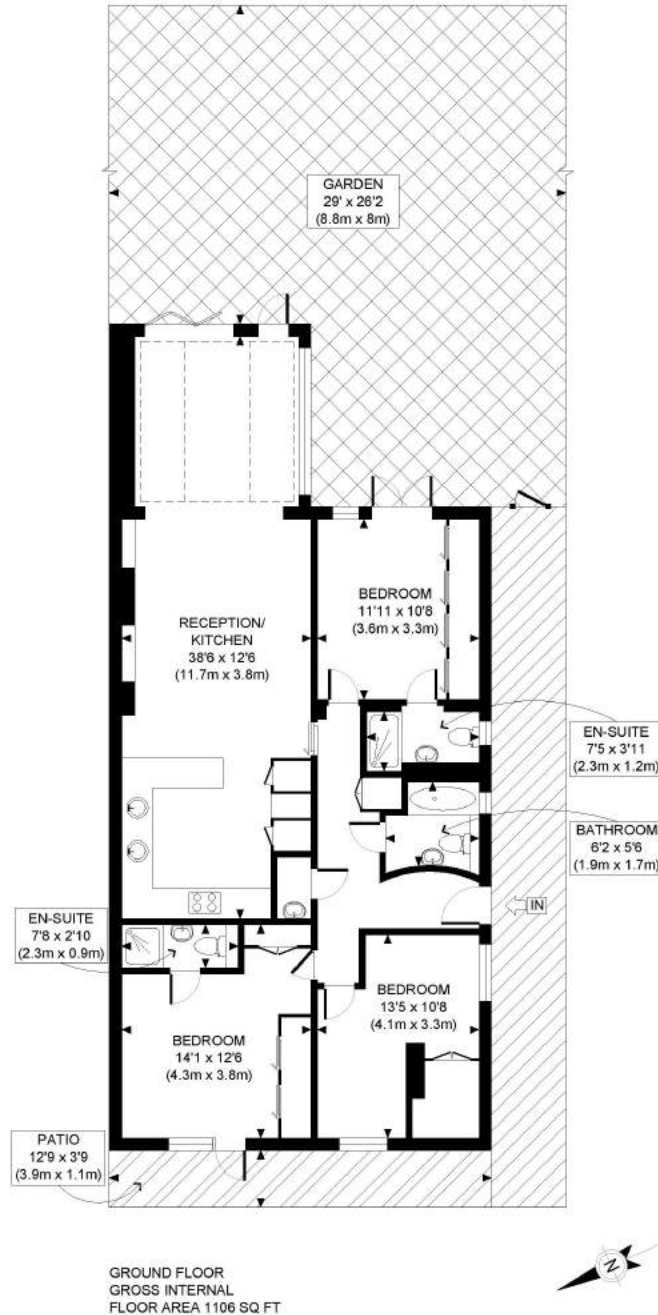
Priory Terrace is a quiet one-way street located just 0.5 miles from South Hampstead Overground and 0.7 miles from West End Lane where local amenities and West Hampstead underground station (Jubilee Line), overground and Thameslink can be found.

Features

- 3 Bedrooms
- 3 Bathrooms
- Rear Garden
- Stylish Flat
- Perfectly Located
- Private Entrance + Side Access
- Utility Room
- Modern Open Plan Kitchen/Reception
- Fully Fitted Kitchen
- 1106 Sq Ft (103 Sq M)



Priory Terrace, West Hampstead, NW6



APPROX. GROSS INTERNAL FLOOR AREA: 1106 SQ FT / 103 SQM

PROPERTY PHOTO PLANS.CO.UK
ONE STOP SHOP FOR PROPERTY MARKETING

This plan is for illustrative purposes only and should be used as such by any prospective client. Whilst every attempt has been made to ensure the accuracy of the Floor Plan contained here, measurements of the doors, windows, rooms and any other items are approximate and no responsibility is taken for any errors, omissions, or misstatement. The services, systems and appliances shown have not been tested and no guarantee as to the operability or efficiency can be given.