



**Wood Vale, London, N10**

£4,200  
pcm



## Wood Vale, London, N10

A well presented and character filled 5 bedroom, 2 bathroom semi-detached house offering 2061 Sq Ft (191 Sq M) of internal space as well as an expansive rear garden and off street parking for two cars.

This family home is arranged over two floors, the ground floor includes a gorgeous reception room with views of the rear garden, a separate dining room and a modern and fully fitted kitchen as well as a bathroom. Five generous sized bedrooms with ample storage plus a family bathroom are located upstairs.

This is the perfect family home with the house benefiting from direct access to Crouch End Open Space at the rear of the garden. Highgate underground station (Northern Line) is located just 0.6 miles from Wood Vale.

### Features

- Available from 5th September 2022
- 5 Bedrooms - 2 Bathrooms
- Off Street Parking For Two Cars
- Semi-Detached House
- Extensive Rear Garden
- Reception Room + Separate Dining Room
- Perfectly Located
- Offering 2061 Sq Ft (191 Sq M)

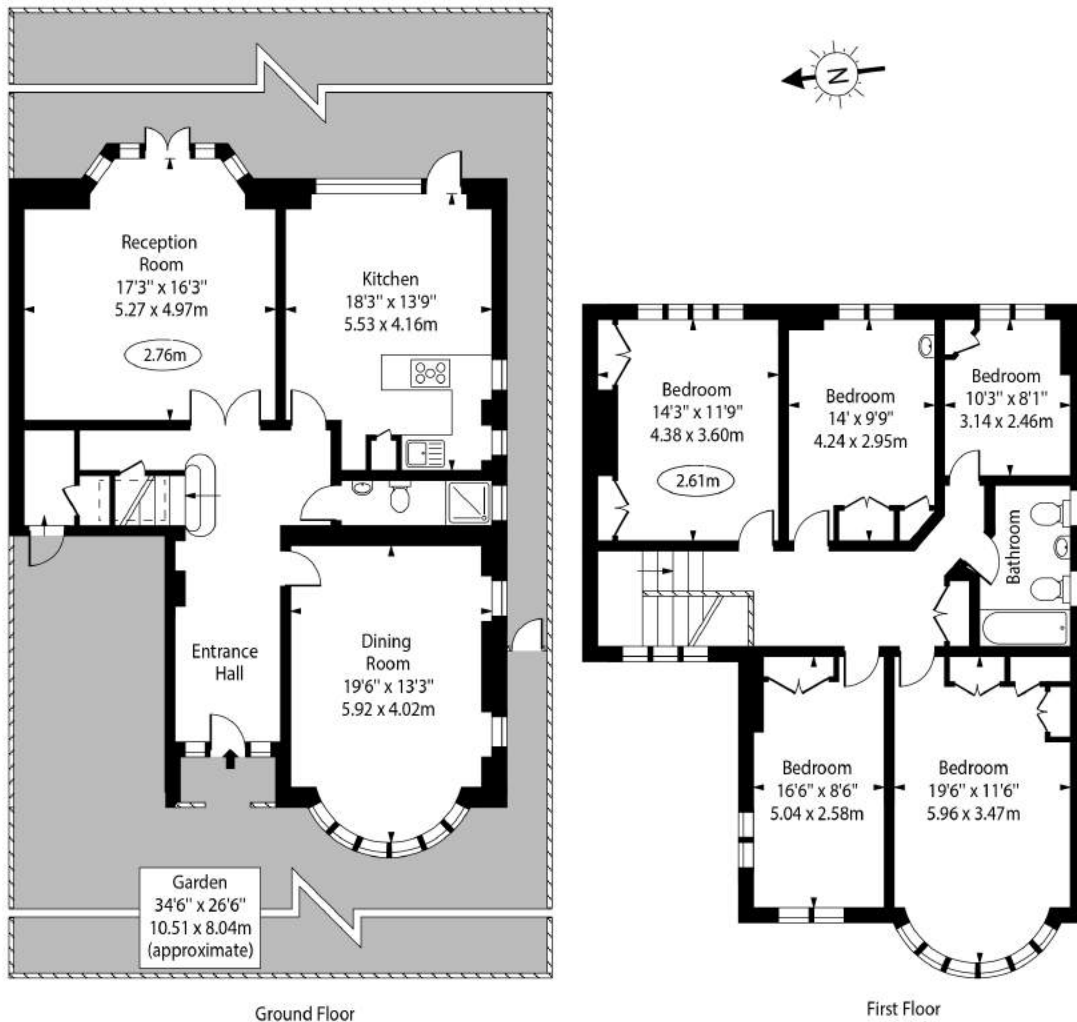






# Wood Vale, London, N10

Wood Vale, N10



Approx Gross Internal Area 2061 Sq Ft - 191.51191.51 Sq M

For Illustration Purposes Only - Not To Scale Floor Plan by [www.nogaphotostudio.com](http://www.nogaphotostudio.com) Ref: No.45223

This floor plan should be used as a general outline for guidance only. Any intending purchaser or lessee should satisfy themselves by inspection, searches, enquiries and full survey as to the correctness of each statement. Any areas, measurements or distances quoted are approximate and should not be used to value a property or be the basis of any sale or let.