



Copenhagen Street, Islington, N1

£2,225
pcm



Copenhagen Street, Islington, N1

Situated within a modern building is this spacious two double bedroom first floor apartment with balcony offering 696 sq ft (64 Sq M) of internal space including a generous sized 28ft kitchen/reception. Offered Unfurnished. Available Now.

Barnard Park is perfectly positioned with Angel underground station (Northern Line) just 0.5 miles away and with Kings Cross/St Pancras underground stations 0.9 miles from the apartment. Caledonian Road over ground station along with restaurants and local amenities are also close by.

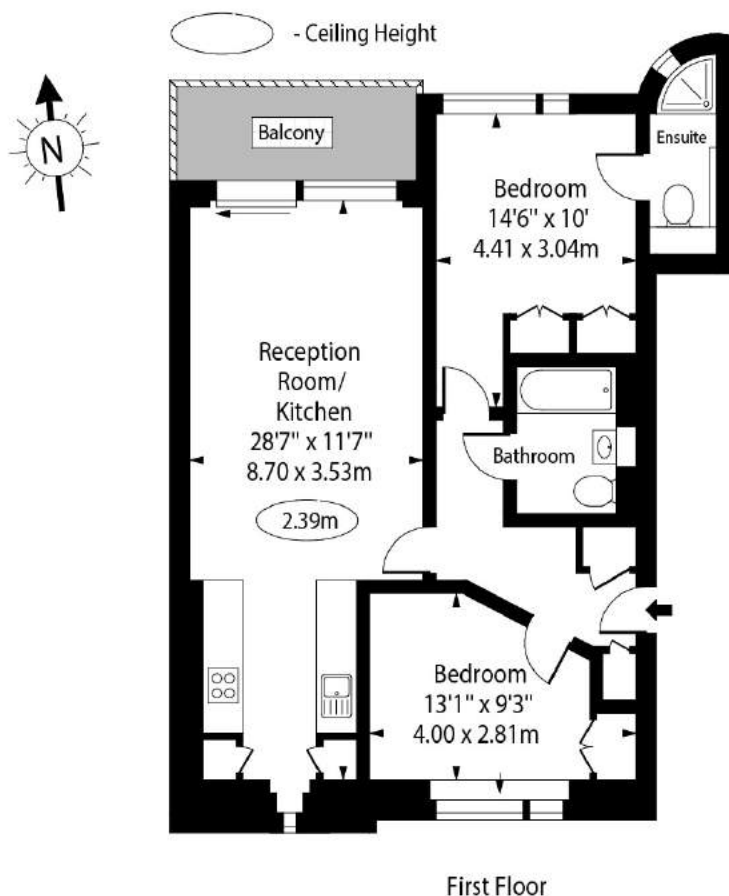
Features

- Two Double Bedrooms
- Two Bathrooms
- Unfurnished
- Available Now
- Modern Building
- Spacious Flat
- Balcony
- 696 Sq Ft (64 Sq M) Of Internal Space



Copenhagen Street, Islington, N1

Copenhagen Street, N1 0JW



Approx Gross Internal Area 696 Sq Ft - 64.66 Sq M

For Illustration Purposes Only - Not To Scale Floor Plan by www.nogaphotostudio.com Ref: No.44217

This floor plan should be used as a general outline for guidance only. Any intending purchaser or lessee should satisfy themselves by inspection, searches, enquiries and full survey as to the correctness of each statement. Any areas, measurements or distances quoted are approximate and should not be used to value a property or be the basis of any sale or let.