



Chalcot Gardens, NW3

£1,025,000



Chalcot Gardens, NW3

Located in the heart of Belsize Park and on a setback private road, is this hugely impressive two double apartment situated on the first floor of a gorgeous period building.

This fine flat boasts 724 sq Ft (67 Sq M) of internal space including a generous 22ft reception room with high ceilings, master bedroom with en-suite and a second double bedroom. Further key features include a fully fitted kitchen with breakfast bar, a balcony and a long lease.

Chalcot Gardens is perfectly situated just yards away from the restaurants and local amenities found on England's Lane and with Belsize Park underground (Northern Line) situated just 0.4 miles away.

Features

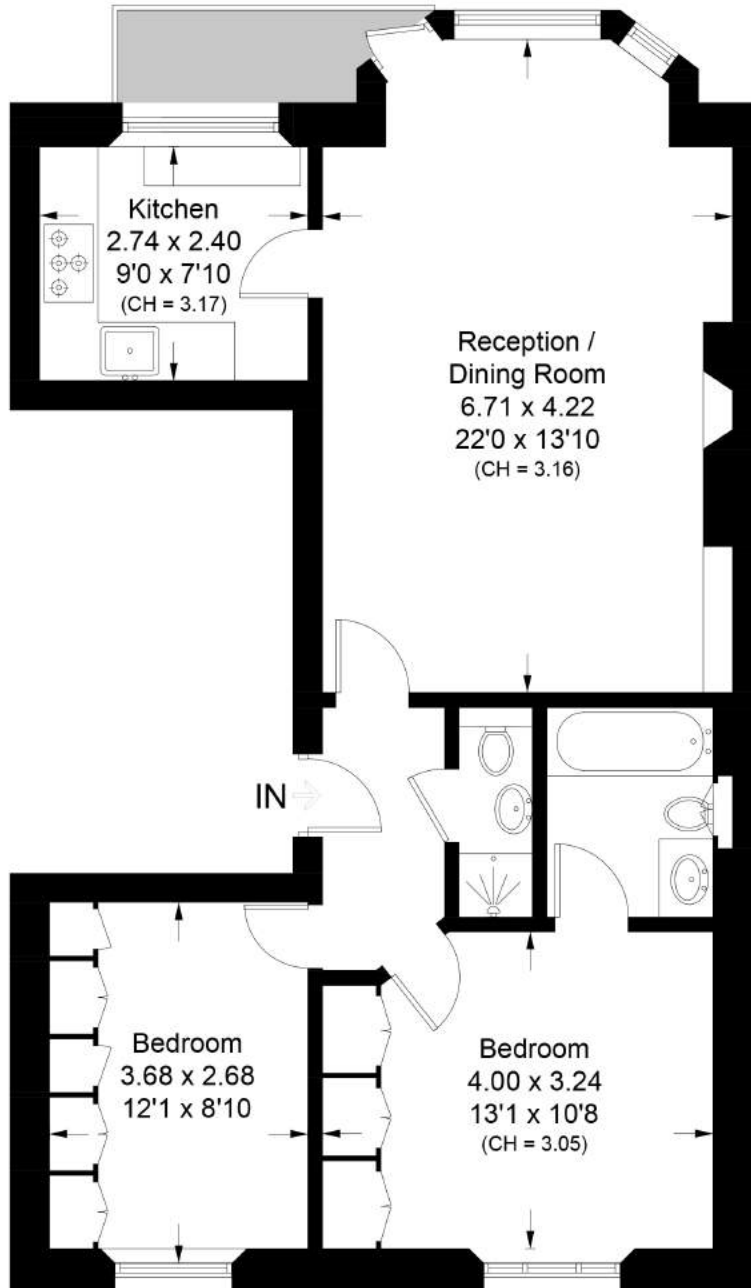
- Two Double Bedrooms
- Two Bathrooms
- Fully Fitted Kitchen
- First Floor
- Located In The Heart Of Belsize Park
- Within Gorgeous Period Building
- Long Lease Remaining
- Generous 22ft Reception Room
- Balcony
- Setback From The Road



Chalcot Gardens, NW3

Chalcot Gardens, NW3

Approximate Area = 67.3 sq m / 724 sq ft
Including Limited Use Area (0.2 sq m / 2 sq ft)



First Floor

Surveyed and drawn in accordance with the International property measurements standards (IPMS 2: Residential)
Not drawn to scale unless stated. Whilst every care is taken in the preparation of this plan,
please check all dimensions, shapes and compass bearings before making any decisions reliant upon them.