



**Barrington, Oakleigh Avenue, Whetstone, N20**

**£410,000**



## Barrington, Oakleigh Avenue, Whetstone, N20

A recently refurbished two double bedroom first floor apartment situated within an imposing period building with key features including two allocated parking spaces and access to communal gardens.

This bright and spacious 672 Sq Ft (62 Sq M) flat would make an ideal first time purchase or buy to let investment and further boasts two spacious double bedrooms with generous storage space, a bathroom (with bath and separate shower) as well as a modern kitchen/reception room.

Barrington is situated on Oakleigh Avenue and is positioned just 0.6 miles from Totteridge & Whetstone underground station (Northern Line) and 0.5 miles to Oakleigh Park train station.

### Features

- Imposing Period Building
- Two Double Bedrooms
- Two Allocated Parking Spaces
- Communal Gardens
- First Floor Apartment
- Recently Refurbished
- Open Plan Kitchen/Reception
- Long Lease
- Circa 178 Years Remaining On The Lease

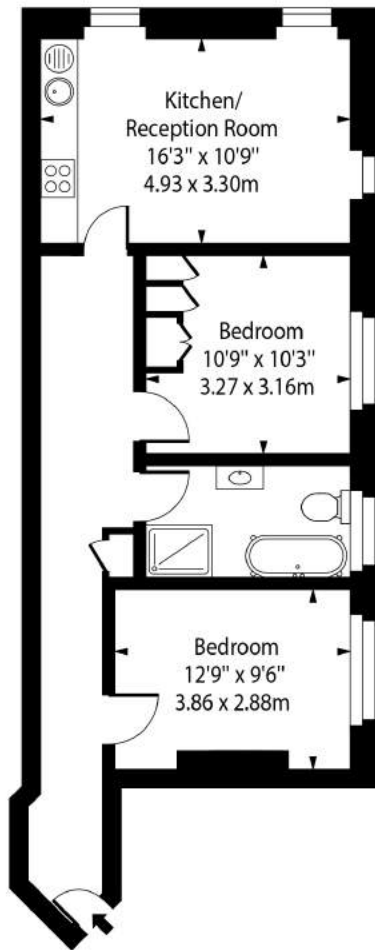
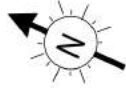






Barrington, Oakleigh  
Avenue, Whetstone,  
N20

Barrington,  
Oakleigh Avenue, N20



First Floor

Approx Gross Internal Area 672 Sq Ft - 62.51 Sq M

For Illustration Purposes Only - Not To Scale Floor Plan by [www.nogaphotostudio.com](http://www.nogaphotostudio.com) Ref: No.42823

This floor plan should be used as a general outline for guidance only. Any intending purchaser or lessee should satisfy themselves by inspection, searches, enquiries and full survey as to the correctness of each statement. Any areas, measurements or distances quoted are approximate and should not be used to value a property or be the basis of any sale or let.