



Adamson Road, Belsize Park, NW3

£850,000



Adamson Road, Belsize Park, NW3

A meticulously refurbished two double bedroom, two bathroom duplex apartment arranged over the raised ground floor and lower ground floor of a gorgeous period building.

This fine flat benefits from an open plan kitchen/reception room on the raised ground floor and a two double bedrooms, two bathrooms + separate WC on the lower ground floor level.

Adamson Road is perfectly located with Swiss Cottage underground station (Jubilee Line) situated just 0.1 miles away and with Belsize Park underground station (Northern Line) 0.7 miles from the apartment. South Hampstead over ground is positioned just 0.4 miles away, with restaurants, local amenities and further transport links also close by.

Features

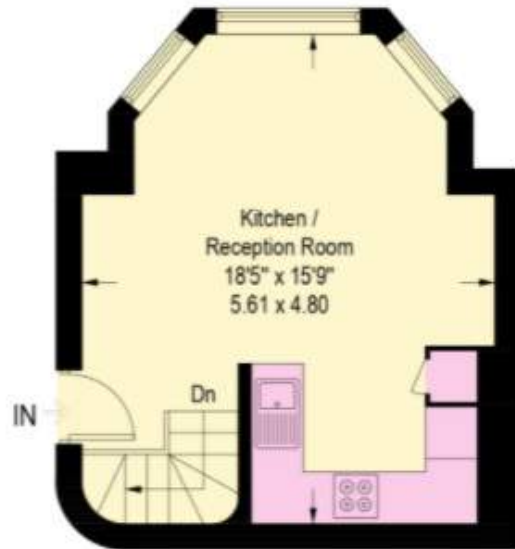
- Meticulously Refurbished
- Two Double Bedrooms
- Two Bathrooms + Separate WC
- Duplex Apartment
- Located in A Gorgeous Period Building
- Open Plan Kitchen/Reception
- Perfectly Located



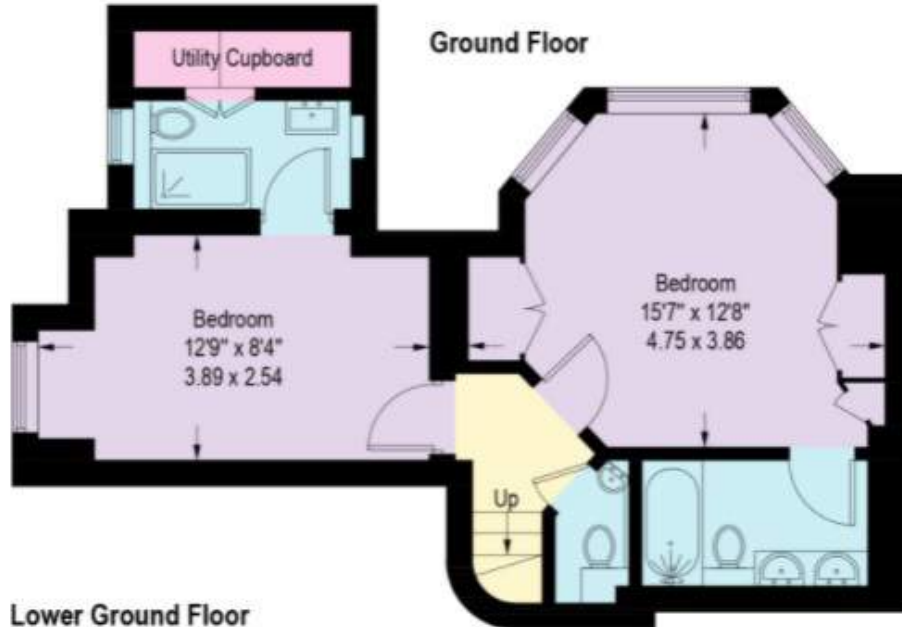
Adamson Road,
Belsize Park, NW3

Adamson Road, NW3

Approximate Gross Internal Area = 787 sq ft / 73.1 sq m



Ground Floor



Lower Ground Floor

Illustration for identification purposes only,
measurements are approximate, not to scale. (ID773332)