



Saltram Crescent, Maida Vale, W9

£625,000



Saltram Crescent, Maida Vale, W9

A character filled two bedroom garden apartment benefiting from 659 Sq Ft (61 Sq M) of internal space including a generously proportioned kitchen/reception room which acts as the focal point of this fine flat.

This ground floor home benefits from a private patio garden which can be accessed via the kitchen/reception area and the master bedroom, high ceilings, wooden flooring throughout and two stunning fireplaces located in the reception room. Additional key features include a contemporary bathroom, ample storage and a long lease.

Saltram Crescent is perfectly located just 0.3 miles from Queens Park underground station (Bakerloo Line) and the local amenities and restaurants found on Salusbury Road.

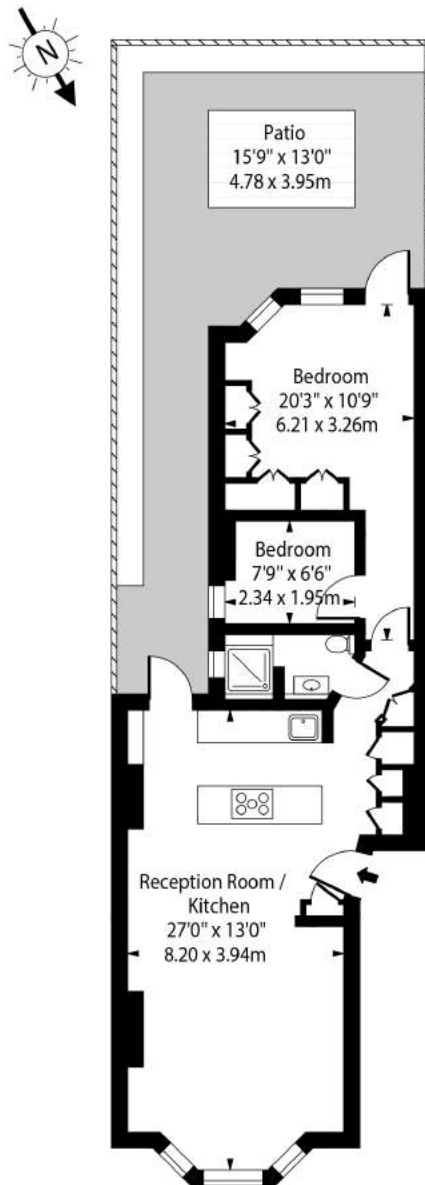
Features

- Garden Apartment
- Two Bedrooms
- Generous Open Plan Kitchen/Reception
- Long Lease
- Wooden Flooring Throughout
- Private Patio Garden
- High ceilings
- Contemporary Bathroom
- Ample Storage
- 659 Sq Ft (61 Sq M) Of Internal Space



Saltram Crescent, Maida Vale, W9

Saltram Crescent, W9 3HR



Ground Floor

Approx Gross Internal Area 659 Sq Ft - 61.24 Sq M

For Illustration Purposes Only - Not To Scale Floor Plan by www.nogaphotostudio.com Ref: No.43954

This floor plan should be used as a general outline for guidance only. Any intending purchaser or lessee should satisfy themselves by inspection, searches, enquiries and full survey as to the correctness of each statement. Any areas, measurements or distances quoted are approximate and should not be used to value a property or be the basis of any sale or let.