



Blomfield Villas, Little Venice, W2

£539,950



Blomfield Villas, Little Venice, W2

A perfectly located and well proportioned 3 double bedroom ground floor apartment benefiting from 762 Sq Ft (70 Sq M) of internal space. This generously sized flat would make an ideal first time purchase or buy-to-let investment and furthermore benefits from a private rear entrance which offers access to a patio area, a spacious reception room and separate kitchen.

Additional key features include ample storage, double glazing throughout and a long lease (circa 175 years remaining).

Blomfield Villas is perfectly located just 0.3 miles from Royal Oak underground station (Circle & Hammersmith & City lines) and equal distance to Warwick Avenue underground station (Bakerloo line). Paddington station is also 0.7 miles from the flat.

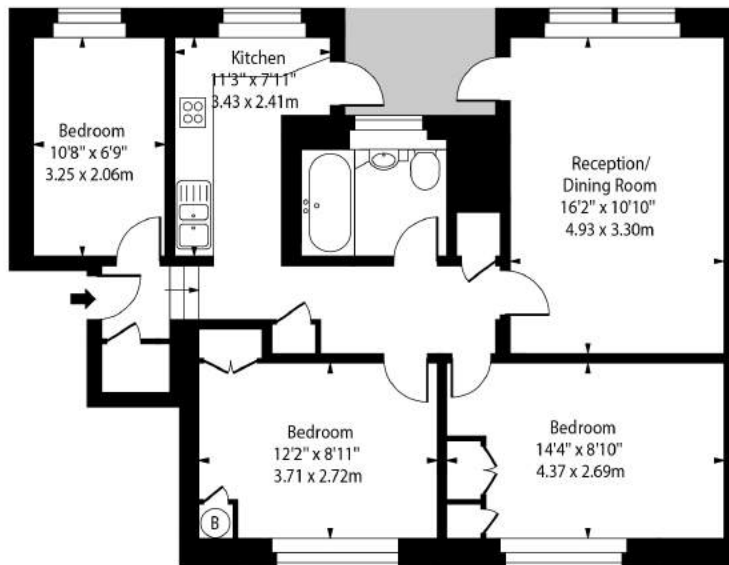
Features

- 3 Double Bedrooms
- Well Proportioned Throughout
- Perfectly Located
- Ground Floor Apartment
- Long Lease
- Private Rear Entrance
- Separate Kitchen
- Spacious Reception Room
- Ideal First Time Purchase or BTL Investment
- Double Glazed Throughout



Blomfield Villas, Little Venice, W2

Blomfield Villas, W2



Lower Ground Floor

Approx Gross Internal Area 762 Sq Ft - 70.79 Sq M

For Illustration Purposes Only - Not To Scale Floor Plan by www.nogaphotostudio.com Ref: No.43901

This floor plan should be used as a general outline for guidance only. Any intending purchaser or lessee should satisfy themselves by inspection, searches, enquiries and full survey as to the correctness of each statement. Any areas, measurements or distances quoted are approximate and should not be used to value a property or be the basis of any sale or let.