



## Walsingham House, High Road, London, N20

£340,000



## Walsingham House, High Road, London, N20

A stylish and perfectly presented one bedroom apartment located on the top floor (with lift) of a recently converted building benefiting from secure allocated parking and a long lease.

This gorgeous flat boasts a stunning fully fitted kitchen, an impressive bathroom and a delightful double bedroom with ample storage. The seller of this property has smartly maximised the space available with the apartment now offering generous storage throughout with additional benefits including a video entry phone system, an external bike storage unit and stunning wooden flooring.

We have been advised that the remaining lease length is circa 122 years, service charge of circa £1,043.07 per annum and Ground rent of circa £250.00 per annum.

Walsingham House is ideally positioned on Whetstone High Road with local amenities, restaurants and transport links situated very close by. Totteridge & Whetstone underground (Northern line) is located just 0.3 miles from the apartment and Oakleigh Park (overground) 0.6 miles.

### Features

- Secure Allocated Parking
- Stylish & Perfectly Presented
- External Bike Storage Unit
- Top Floor Apartment (With Lift)
- Long Lease
- Stunning Fully Fitted Kitchen
- Generous Storage Throughout
- Video Entry Phone System
- Located Within Recently Converted Building

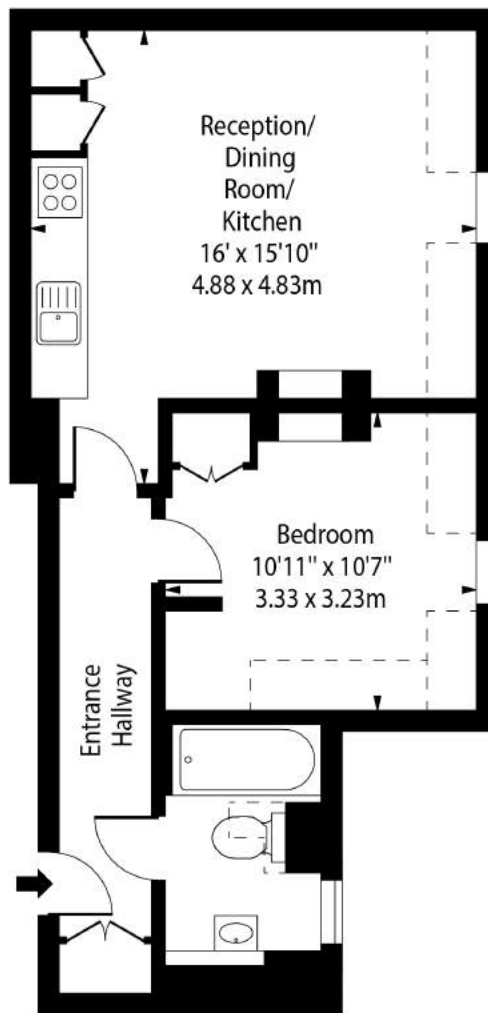
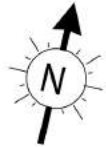






Walsingham House,  
High Road, London,  
N20

Walsingham House, N20 9HR



Second Floor

Approx Gross Internal Area 408 Sq Ft - 37.90 Sq M

Approx Floor Area Including Restricted Heights 453 Sq Ft - 42.09 Sq M

For Illustration Purposes Only - Not To Scale Floor Plan by [www.nogaphotostudio.com](http://www.nogaphotostudio.com) Ref: No.43552

This floor plan should be used as a general outline for guidance only. Any intending purchaser or lessee should satisfy themselves by inspection, searches, enquiries and full survey as to the correctness of each statement. Any areas, measurements or distances quoted are approximate and should not be used to value a property or be the basis of any sale or let.