



## Saltram Crescent, Maida Vale, W9

£1,900  
pcm



## Saltram Crescent, Maida Vale, W9

Offered in excellent condition is this two double bedroom private garden apartment benefiting from 656 Sq Ft (60 Sq M) of internal space. This character filled flat features a gorgeous reception room with high ceilings and original features, modern kitchen with direct access to the private rear garden and a contemporary bathroom.

Additional benefits include side access to the garden, high spec appliances and furniture as well as ample storage.

Saltram Crescent is perfectly located just 0.3 miles from Queens Park underground station (Bakerloo Line) and the local amenities and restaurants found on Salusbury Road.

### Features

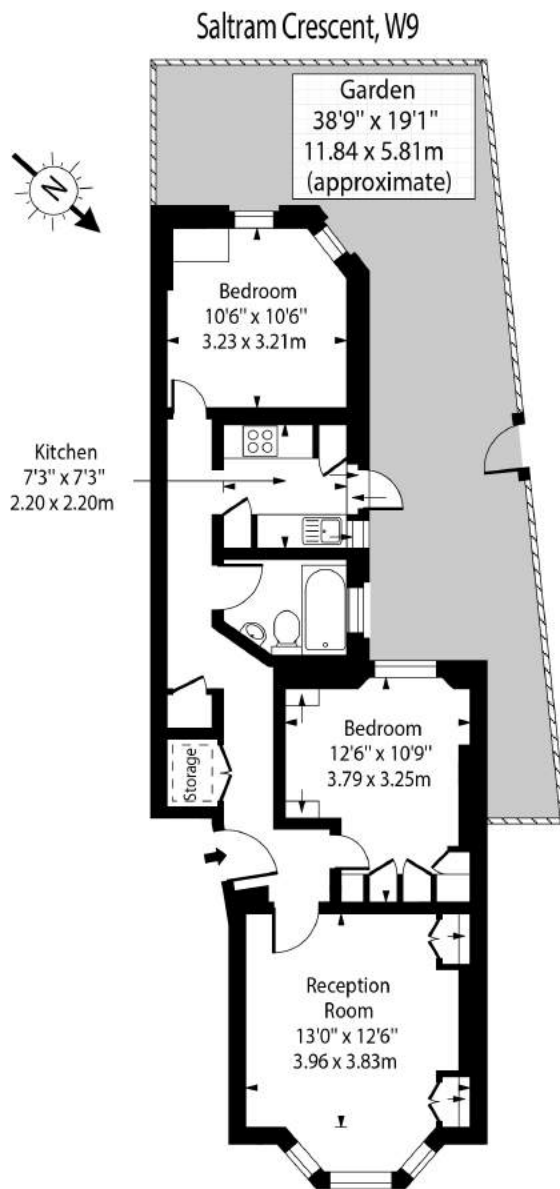
- Private Garden With Side Access
- Offered In Excellent Condition
- Two Double Bedrooms
- Ample Storage Space
- 0.3 Miles From Queens Park Underground
- Character Filled
- High Ceilings
- Modern Kitchen
- Contemporary Bathroom
- Offered Furnished or Unfurnished







# Saltram Crescent, Maida Vale, W9



Ground Floor

Approx Gross Internal Area 656 Sq Ft - 60.93 Sq M

Approx Floor Area Including Restricted Heights 671 Sq Ft - 62.33 Sq M

For Illustration Purposes Only - Not To Scale Floor Plan by [www.nogaphotostudio.com](http://www.nogaphotostudio.com) Ref: No.43013

This floor plan should be used as a general outline for guidance only. Any intending purchaser or lessee should satisfy themselves by inspection, searches, enquiries and full survey as to the correctness of each statement. Any areas, measurements or distances quoted are approximate and should not be used to value a property or be the basis of any sale or let.