



**Malvern Road, Maida Vale, NW6**

**£500,000**



# Malvern Road, Maida Vale, NW6

An exciting opportunity to purchase an unmodernised two bedroom split level apartment offering 700 Sq Ft (65 Sq M) of internal space with benefits including a share of freehold. This top floor flat would make an ideal first time purchase.

Malvern Road is located just 0.5 miles to the local amenities, shops and transport links that Queens Park (Overground & Bakerloo Line) has to offer. Further shops and restaurants can also be found on Shirland Road which is positioned close by to the apartment.

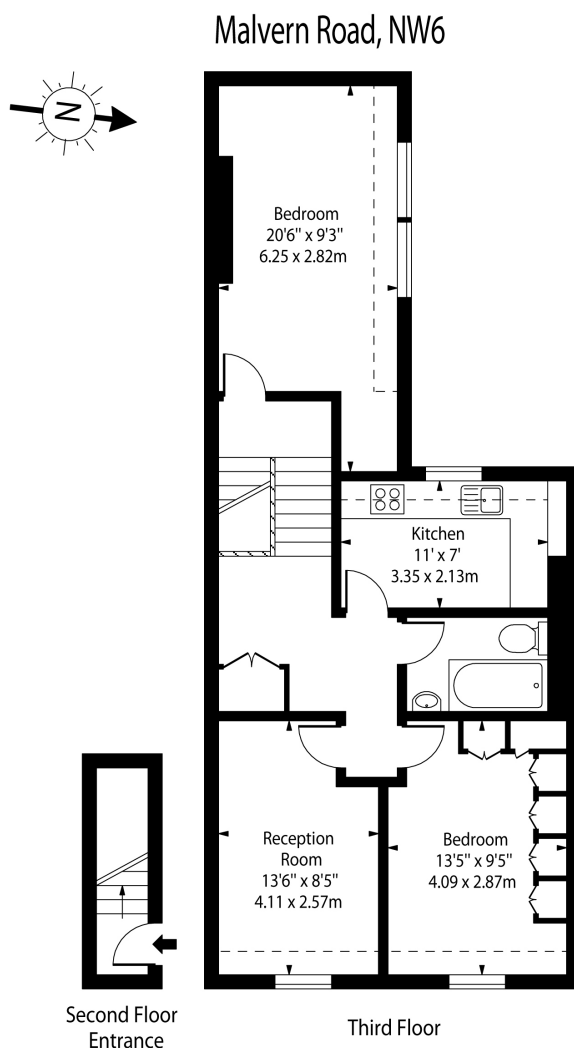
## Features

- Two Double Bedrooms
- Split Level Flat
- Arranged over Top Floors
- In Need Of Modernisation
- 700 Sq Ft (65 Sq M) of internal space
- Ideal First Time Purchase
- Within Easy Reach to Queens Park
- Share Of Freehold
- Sold Chain Free





# Malvern Road, Maida Vale, NW6



Approx Gross Internal Area    632 Sq Ft - 58.71 Sq M  
Approx Floor Area Including Restricted Heights    701 Sq Ft - 65.13 Sq M

For Illustration Purposes Only - Not To Scale    Floor Plan by [www.nogaphotostudio.com](http://www.nogaphotostudio.com)    Ref: No.42600

This floor plan should be used as a general outline for guidance only. Any intending purchaser or lessee should satisfy themselves by inspection, searches, enquiries and full survey as to the correctness of each statement. Any areas, measurements or distances quoted are approximate and should not be used to value a property or be the basis of any sale or let.