



**Lyttelton Court, Lyttelton Road, London, N2**

**£475,000**



# Lyttelton Court, Lyttelton Road, London, N2

A perfectly situated and well-presented two double bedroom apartment offering 725 Sq Ft (67 Sq M) of internal space, including an attractive reception room, modern kitchen and generously sized bedrooms.

This well proportioned property enjoys an abundance of natural light and access to delightful communal gardens. A balcony, long lease, residents parking and the close proximity to Lyttelton Playing Fields are just some of the additional benefits of this charming home.

Lyttelton Court is located just 0.8 miles from East Finchley Underground station (Northern Line), with several local amenities, restaurants and cafés found nearby on Market Place.

## Features

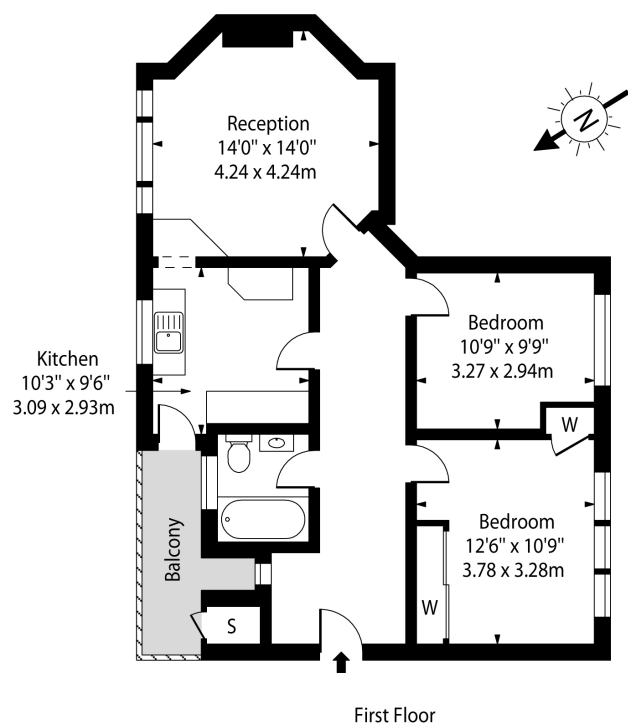
- First Floor Apartment
- Character Filled
- 2 Double Bedrooms
- Delightful Balcony
- Modern Kitchen
- Communal Garden
- Gorgeous Reception Room
- Offering 725 Sq Ft (67 Sq M)
- Leasehold
- Residents Parking





Lyttelton Court,  
Lyttelton Road,  
London, N2

Lyttelton Court,  
Lyttelton Road, N2



Approx Gross Internal Area    725 Sq Ft - 67.42 Sq M

For Illustration Purposes Only - Not To Scale    Floor Plan by [www.nogaphotostudio.com](http://www.nogaphotostudio.com)    Ref: No.40890

This floor plan should be used as a general outline for guidance only. Any intending purchaser or lessee should satisfy themselves by inspection, searches, enquiries and full survey as to the correctness of each statement. Any areas, measurements or distances quoted are approximate and should not be used to value a property or be the basis of any sale or let.