



**YRT
RESIDENTIAL**



Ashmore Road, Maida Vale, W9

£475 p/w

- Two Double Bedrooms
- Brand Newly Refurbished
- Close to Queens Park Station
- Perfectly Located
- Offered Furnished Or Unfurnished
- Two Bathrooms
- Generous Kitchen/Reception Room
- Available Now
- Arranged Over Top Two Floors

020 7846 0262

www.YRTResidential.co.uk

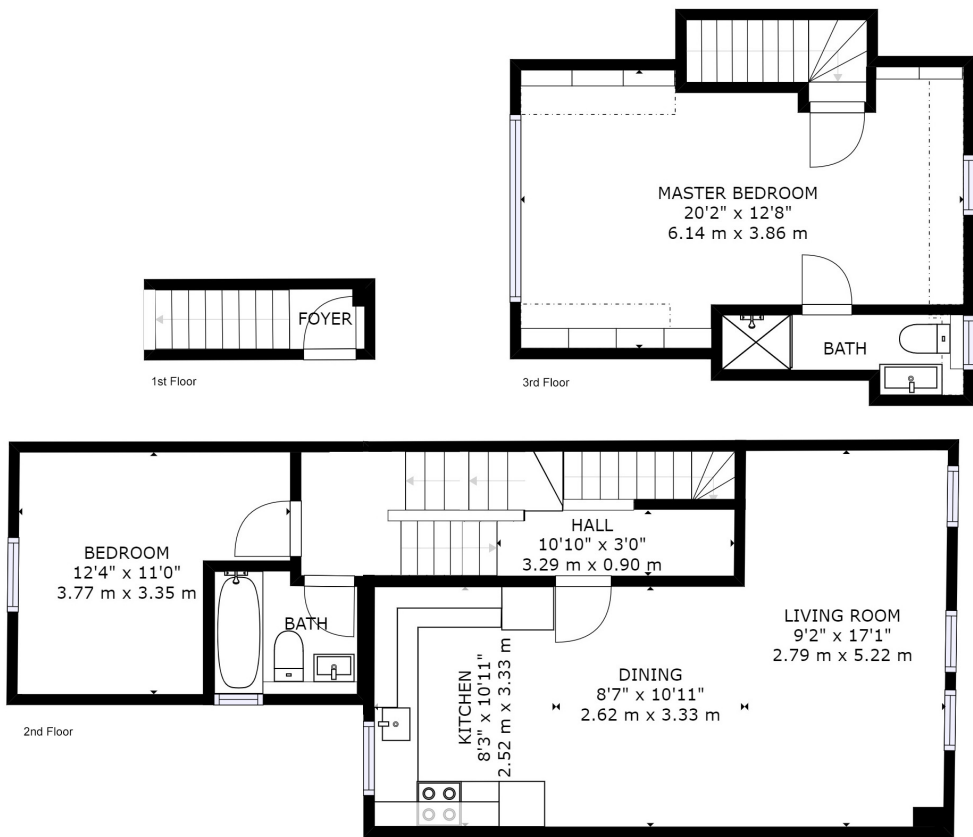
Ashmore Road, Maida Vale, W9

£475 p/w Leasehold

Arranged over the top two floors of this period building is this perfectly located and brand newly refurbished two double bedroom, two bathroom apartment.

This beautifully presented duplex apartment is offered in excellent condition and comprises an entrance hall on the first floor with a modern family bathroom, generously sized second bedroom and an expansive kitchen/reception room found on the second floor level. The master bedroom with en-suite can be found on the third floor along with ample storage space.

Ashmore Road is conveniently located just 0.2 miles from Queens Park station (Bakerloo line) and the



Ashmore Road W9

EXCLUDED AREAS: , REDUCED HEADROOM BELOW 1.5M: 48 sq ft,4 m²
TOTAL: 928 sq ft,86 m²

Floor plans are for identification and guideline purposes only, not to scale.
Compliant with RICS code of measuring practice.

