



**Vale Road, Bushey, WD23**

**£549,950**



## Vale Road, Bushey, WD23

Forming part of a newly built (2018) development of 4 town houses is this stylishly presented three double bedroom, two bathroom family home benefiting from one terrace, a large balcony and two allocated parking spaces.

This superbly configured house is arranged over three floors and boasts an extensive open plan kitchen/reception room on the first floor level which offers direct access to two large terraces, a Jack and Jill bathroom can be found on the top floor between two double bedrooms and a further double bedroom along with a family bathroom is located on the ground floor.

Vale Road is perfectly located just 0.3 miles from Bushey station (Overground & West Midland Trains).

### Features

- Newly Built Town House
- Three Double Bedrooms
- One Terrace & One Large Balcony
- Two Allocated Parking Spaces
- Arranged Over Three Floors
- External Storage Unit
- Perfect Family Home
- Modern Fully Fitted Kitchen
- Double Glazing Throughout
- Forming Part Of a Small Development





# Vale Road, Bushey, WD23

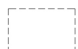


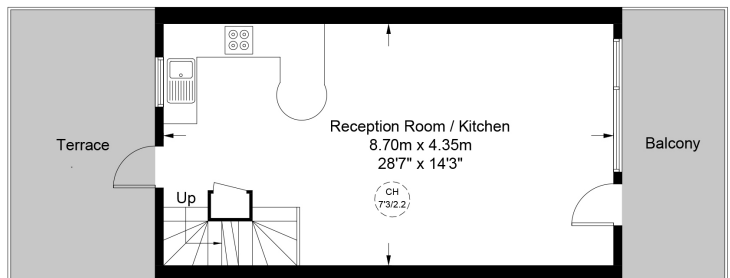
## Vale Road, WD23

Approximate Gross Internal Area = 1021 sq ft / 94.9 sq m  
(Excluding Reduced Headroom)

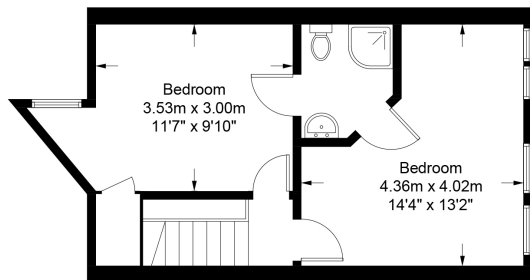
Reduced Headroom = 10 sq ft / 0.9 sq m

Total = 1031 sq ft / 95.8 sq m

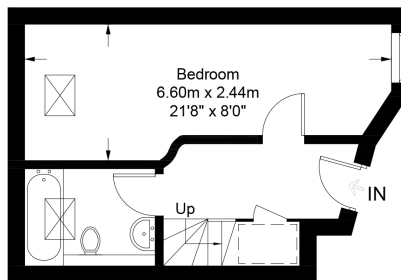
 = Reduced headroom below 1.5m / 5'0"



**First Floor**



**Second Floor**



**Ground Floor**

This plan is for layout guidance only. Not drawn to scale unless stated. Windows and door openings are approximate. Whilst every care is taken in the preparation of this plan, please check all dimensions, shapes and compass bearings before making any decisions reliant upon them. (ID670611)