



**Long Lane, East Finchley, N2**

**£350,000**



## Long Lane, East Finchley, N2

An ideal first time Purchase. A generously proportioned first (top) floor one bedroom apartment benefiting from circa 566 Sq Ft (52 Sq M) of internal space including a modern eat-in kitchen, a bright and spacious reception and a contemporary bathroom.

Further benefits include off street parking (on a first served basis), a long lease and potential to extend into the loft space (subject to planning permission and freeholders consent).

Long Lane is located less than 1 mile from East Finchley underground station (Northern Line) and is perfectly situated for the local amenities and further transport links that both East Finchley and Finchley Central have to offer.

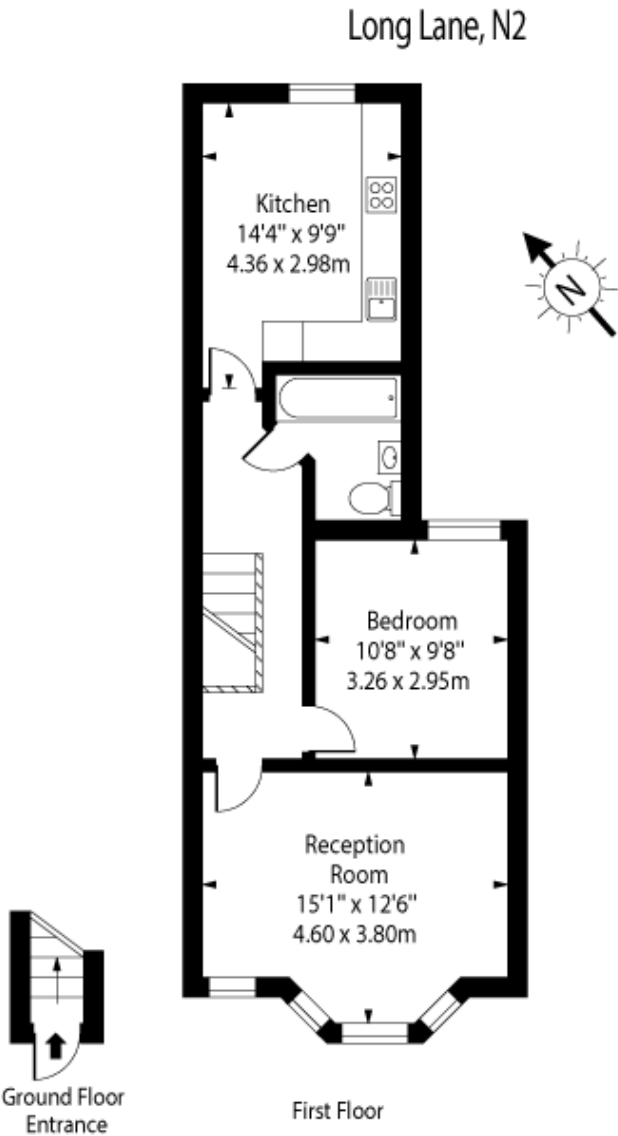
### Features

- Ideal First Time Purchase
- Off Street Parking (On A First Served Basis)
- Generously Proportioned Flat
- First Floor Apartment
- Long Lease
- Potential To Extend
- Spacious Reception Room
- Separate Eat-in Kitchen
- Perfectly Located





Long Lane, East  
Finchley, N2



Approx Gross Internal Area     566 Sq Ft - 52.61 Sq M

For Illustration Purposes Only - Not To Scale   Floor Plan by [www.nogaphotostudio.com](http://www.nogaphotostudio.com)   Ref: No.40939

This floor plan should be used as a general outline for guidance only. Any intending purchaser or lessee should satisfy themselves by inspection, searches, enquiries and full survey as to the correctness of each statement. Any areas, measurements or distances quoted are approximate and should not be used to value a property or be the basis of any sale or let.