



Newton Road, Cricklewood, NW2

£485,000



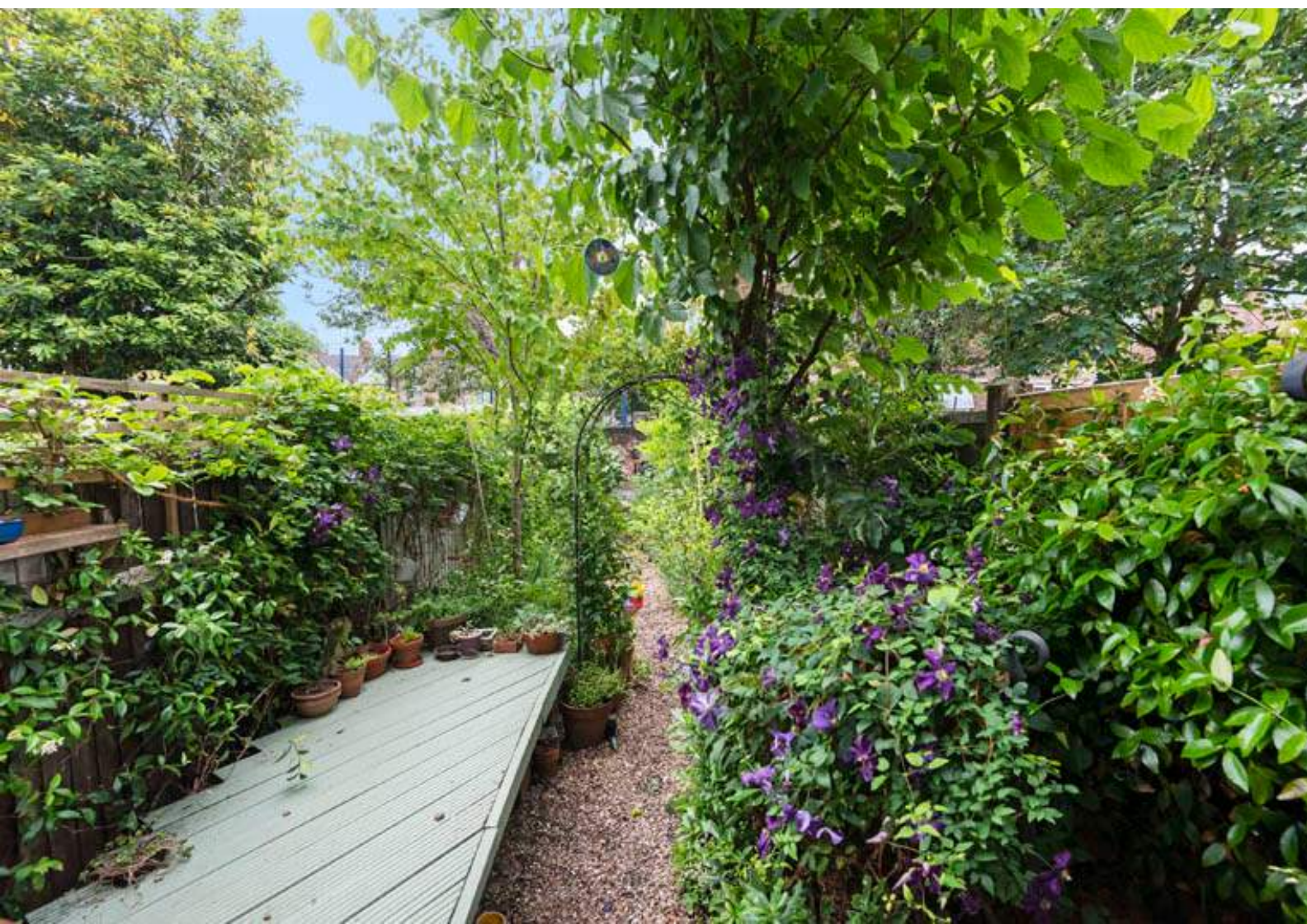
Newton Road, Cricklewood, NW2

A charming two bedroom garden apartment offering 751 sq ft (69 sq M) of internal space including a delightful reception room, a separate dining room and an expansive master bedroom. Further benefits include an enchanted rear private garden, a long lease and a separate entrance.

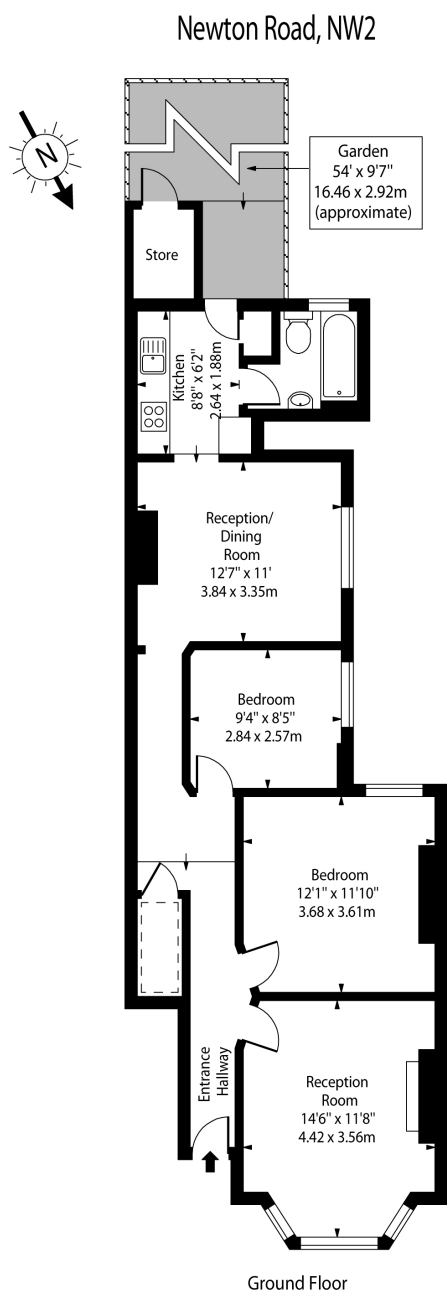
Newton Road is conveniently located just 0.7 miles from Cricklewood station (Thameslink) and one mile from Willesden Green underground (Jubilee Line) with numerous bus routes providing excellent links into the City and Central London also near by.

Features

- Enchanted Rear Private Garden
- Charming Apartment
- Private Entrance
- 751 sq ft (69 sq M) Of Internal Space
- Two Bedrooms
- One Bathroom
- Delightful Reception Room
- Separate Dining Room
- Long Lease
- Perfectly Located



Newton Road, Cricklewood, NW2



Approx Gross Internal Area 751 Sq Ft - 69.77 Sq M
 Approx Floor Area Including Restricted Heights 773 Sq Ft - 71.81 Sq M
 (Excluding Store)

For Illustration Purposes Only - Not To Scale Floor Plan by www.nogaphotostudio.com Ref: No.40624

This floor plan should be used as a general outline for guidance only. Any intending purchaser or lessee should satisfy themselves by inspection, searches, enquiries and full survey as to the correctness of each statement. Any areas, measurements or distances quoted are approximate and should not be used to value a property or be the basis of any sale or let.