



Greencroft Gardens, South Hampstead, NW6

£1,000,000



Greencroft Gardens, South Hampstead, NW6

A stylish 3 bedroom, 3 bathroom split level apartment benefiting from 1029 Sq Ft (95 Sq M) of internal space including a generously proportioned 19ft x 17ft reception room/kitchen area.

This top floor apartment boasts 2 double bedrooms and a spacious dining room (which could comfortably operate as a third bedroom), two en-suite bathrooms and a balcony located off bedroom 2. Further key features include a share of freehold and a separate storage cupboard.

Greencroft Gardens is perfectly positioned just 0.4 miles from Finchley Road Underground (Metropolitan Line & Jubilee Line) and circa 0.5 miles from West Hampstead Underground (Jubilee Line), Overground and Thameslink.

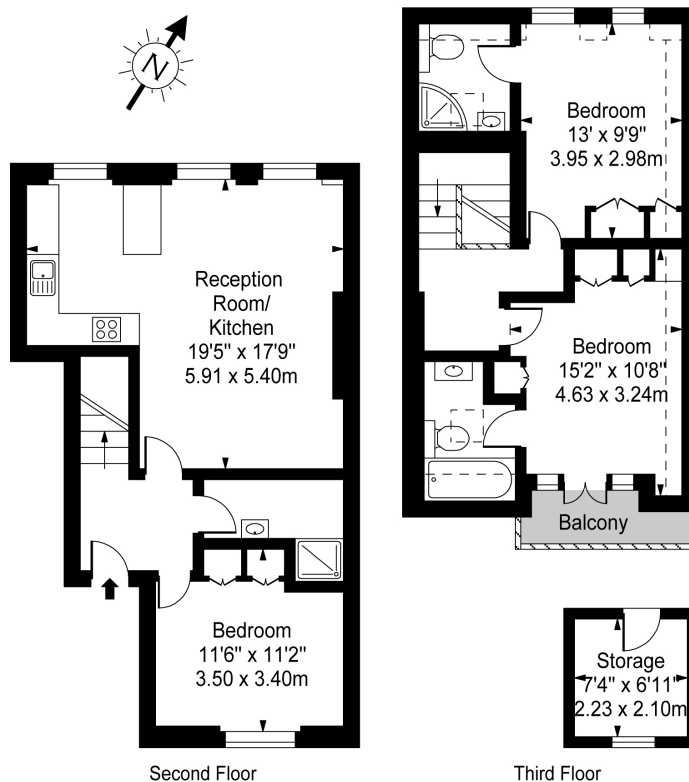
Features

- Stylish Apartment
- 3 Bedrooms
- 3 Bathrooms
- Balcony
- 1029 Sq Ft (95 Sq M)
- Separate Storage Room
- Share Of Freehold
- Generous Living Space
- Perfectly Positioned
- Gorgeous Building



**Greencroft Gardens,
South Hampstead,
NW6**

**Greencroft Gardens,
South Hampstead, NW6**



Approx Gross Internal Area 933 Sq Ft - 86.67 Sq M

Approx Floor Area Including Restricted Heights & Storage 1029 Sq Ft - 95.62 Sq M

For Illustration Purposes Only - Not To Scale Floor Plan by www.epixandplans.com Ref: No.39882

This floor plan should be used as a general outline for guidance only. Any intending purchaser or lessee should satisfy themselves by inspection, searches, enquiries and full survey as to the correctness of each statement. Any areas, measurements or distances quoted are approximate and should not be used to value a property or be the basis of any sale or let.