



Goldhurst Terrace, South Hampstead, NW6

£785,000



Goldhurst Terrace, South Hampstead, NW6

Situated on the first floor of this elegant period building is this gorgeous 3 bedroom apartment benefiting from a delightful South facing private terrace.

This quietly positioned home boasts a modern kitchen/reception room which offers direct access to the terrace, a spacious principal bedroom and a double second bedroom with ample storage. Further key features include a contemporary bathroom, a study/third bedroom and a share of the freehold.

Goldhurst Terrace is ideally situated within the South Hampstead Conservation area and just 0.6 miles from Finchley Road underground station (Jubilee & Metropolitan line).

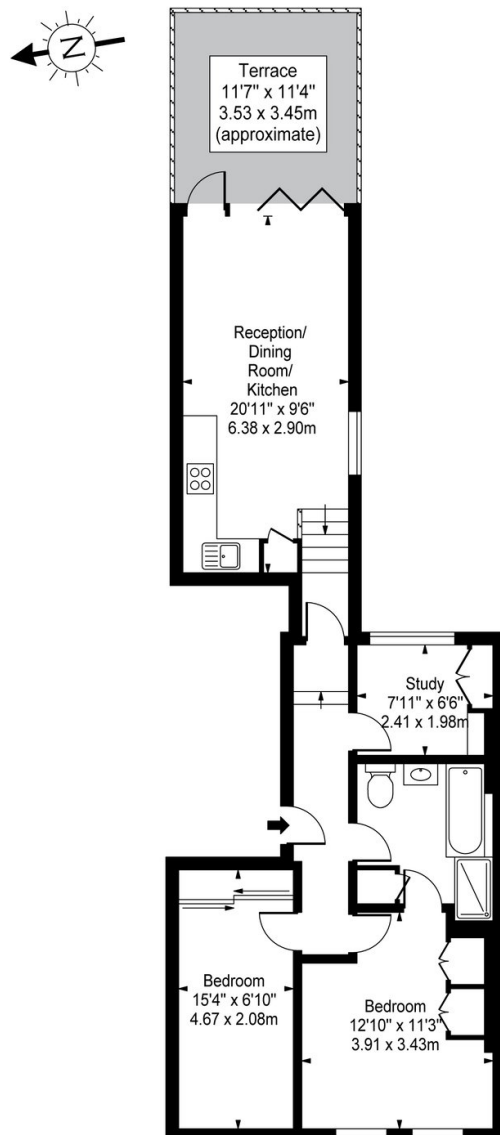
Features

- Delightful Terrace
- 3 Bedrooms
- First Floor Apartment
- Well Presented
- Modern Kitchen
- Share Of Freehold
- Prime Location
- Contemporary Bathroom
- South Hampstead Conservation Area



Goldhurst Terrace,
South Hampstead,
NW6

Goldhurst Terrace,
South Hampstead, NW6 3EX



First Floor

Approx Gross Internal Area **654 Sq Ft - 60.76 Sq M**

For Illustration Purposes Only - Not To Scale Floor Plan by www.nogaphotostudio.com Ref: No.39474

This floor plan should be used as a general outline for guidance only. Any intending purchaser or lessee should satisfy themselves by inspection, searches, enquiries and full survey as to the correctness of each statement. Any areas, measurements or distances quoted are approximate and should not be used to value a property or be the basis of any sale or let.